

SPEC SUMMARY - REF

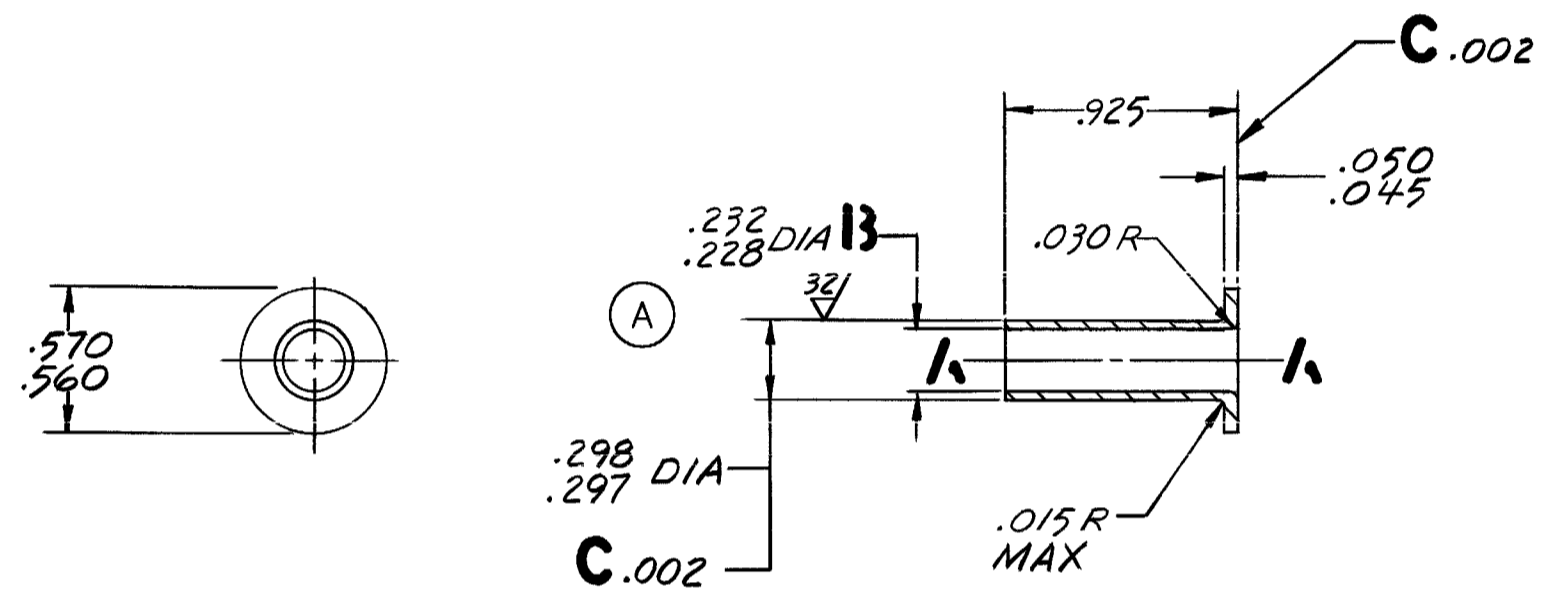
EDT 500
EPS 253
EPS 251
AMS 6324
AMS 6323
AMS 6322
AMS 6282
AMS 6320
EDI 460
ASME B46.1-1995
ASME Y14.36M-1996

REVISION HISTORY

REV	DESCRIPTION	DATE	MOD	APPROVED
A	DP500009839198	08-07-29	PRI/PJC	PRI/DR

LAST DESIGNATION LETTER USED: C

(A) MARK THE FOLLOWING PER EDI 460-94-95:  
 "MFR 63005"  
 "PNR " AND ROLLS-ROYCE PART NUMBER  
 "REV " AND LAST REVISION SYMBOL



AXIS *k-k* ESTABLISHED BY DIA B  
 FEATURES SHALL BE CONCENTRIC AND SQUARE  
 ABOUT AXIS *k-k* WITHIN THE TIR SPECIFIED BY C

FINISH ALL OVER

(A) BREAK SHARP EDGES .005-.020 UOS  
 UOS THE FOLLOWING TOLERANCES APPLY:  
 TOLERANCE ON ANGLES ± ----  
 TOLERANCE ON 2 PLACE DECIMALS ± ----  
 TOLERANCE ON 3 PLACE DECIMALS ± .010

(A) SURFACE TEXTURE SYMBOLS PER ASME Y14.36M-1996  
 SURFACE TEXTURE PER ASME B46.1-1995  
 DRAWING INTERPRETATION PER EDT 500

(A)

HEAT TREAT TABLE	
MATERIAL	HEAT TREAT
AMS 6320	EPS 251 Rc C32-C36
AMS 6282	EPS 251
AMS 6322	EPS 253
AMS 6323	EPS 253
AMS 6324	EPS 253

**EXPORT CONTROLLED - WARNING** - THIS DOCUMENT MAY CONTAIN INFORMATION SUBJECT TO THE INTERNATIONAL TRAFFIC IN ARMS REGULATIONS (ITAR) OR THE EXPORT ADMINISTRATION REGULATION (EAR) OF 1979. THIS INFORMATION MAY NOT BE EXPORTED, RELEASED, OR DISCLOSED TO FOREIGN NATIONALS WITHOUT FIRST COMPLYING WITH THE EXPORT LICENSE REQUIREMENTS OF THE ITAR AND/OR THE EAR. INCLUDE THIS NOTICE WITH ANY REPRODUCED PORTION OF THIS DOCUMENT.

STATEMENT D, DOD AND US DOD CONTRACTORS ONLY  
 538TH ACSS/GFEB, 3001 STAFF DRIVE, SUITE 2AF1 103C  
 TINKER AFB, OK 73145-3041

"WARNING- EXPORT CONTROLLED"

CONTRACT # F34601 - 01 - D - 0155

"Changed from 63005 to ODA cage 73342"  
 "per Rights Letter dtd 4-27-2010"

UOS ALL DIMENSIONS ARE IN INCHES  
 APPLICATION: SEE SEPARATE PARTS LIST

THIRD ANGLE PROJECTION	APPROVALS	DATE
COMPUTER GRAPHICS DRAWING	DRAWN	C. L. HENRY 12-27-66
	CHECKED	McKINLEY 11-12-67
	CHK DR	C. Hadden 4-13-67
	METALLURGY	R. MONTIETH 3-8-67
	ENGR 1	J. CREAM 3-13-67
ENGR 2	M. THOMAS 3-22-67	
ENGR 3	A. JOHNSON 4-1-67	
FINAL	R. WENTE 4-5-67	
REVIEW APPROVAL	[Signature] 6 JUNE 68	

**Rolls-Royce**  
 Indianapolis, Indiana USA

TITLE: **STEM, CHECK VALVE**

SIZE: A1 CAGE CODE: 63005 DWG NO: 6858626

SCALE: 2/1 MODEL: 501 SHEET 1 OF 1

REF- 6824316, AL 15737

6858626